



DUNALLEY
PRIMARY SCHOOL
 Learning and achieving together



West Drive
 Cheltenham GLOUCESTERSHIRE GL50 4LB
 Subscribe: <https://dunalleyps.schoolzineplus.co.uk/subscribe>

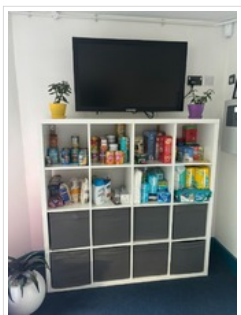
Email: Newsletter
 Phone: 01242 512391 QR Code

7th November - Newsletter

Welcome Back!

We hope you all had a wonderful and relaxing break. It's lovely to see everyone back and ready for a new term filled with learning, laughter, and festive fun — all leading up to the Christmas holidays. Let's make it a joyful and successful term together!

Reminder: Dunalley Pantry



We would like to remind our families about the **Dunalley Pantry**, which supports families who may be experiencing financial challenges. The pantry offers a variety of products, all free of charge, to help families in need.

For your convenience, the pantry has now been moved to the **main entrance area**. You are very welcome to pop in and collect whatever you need. There are some bags available on the side of the pantry unit for your use.

If you would like to **donate items** to the pantry, you are very welcome to add them directly to the shelves or hand them in at the **school office**.

Thank you for helping us to support our community!

Attendance

The law on school attendance and the right to a full-time education

The law entitles every child of compulsory school age to an efficient, full-time education suitable to their age, aptitude, and any special educational need they may have. It is the legal

responsibility of every parent to make sure their child receives that education either by attendance at a school or by education otherwise than at a school.

Where parents decide to have their child registered at school, they have an additional legal duty to ensure their child attends that school regularly. This means **their child must attend all day, every day that the school is open**, except in a small number of allowable circumstances such as being too ill to attend or being given permission for an absence in advance from the school.

Attendance Register

The law requires that we also take the attendance register at the start of each morning session of each school day and once during each afternoon session. We will confirm the afternoon register at the end of the school day, immediately prior to home time. On each occasion, we record whether each registered pupil is physically present in school or, if not, the reason they are not in school using the appropriate national attendance and absence codes from regulation 10 of the School Attendance (Pupil Registration) (England) Regulations 2024.

- Arriving before 8.50am = / code - arrived at school on time.
 - Arriving between 8.50am and 9.20am = L code - late arrival before the registers close.
 - Arriving after 9.20am = U code - late arrival after registers have closed.
 - Arriving at school but leaving and not being present at 3.10pm KS1 or 3.15pm KS2 = will result in the correct code, linked to the reason given for leaving, being allocated retrospectively.
 - Leaving school at 3.10pm KS1 or 3.15pm KS2 = \ code - left school at the end of the school day.
 - Arriving after 8.50am or leaving before 3.10pm KS1 or 3.15pm KS2 for a medical appointment = M code
- Parent/Carer responsibilities**

We expect all parents/carers to:

- Ensure their child's attendance every day the school is open except when a statutory reason applies
- Notify the school as soon as possible when their child has to be unexpectedly absent (e.g. sickness)
- Only request leave of absence in exceptional circumstances

and do so in advance

- Book any medical appointments around the school day where possible

If necessary, due to poor attendance levels, we expect parents/carers to:

- Work with the school and local authority to help them understand their child's barriers to attendance
- Proactively engage with the support offered to prevent the need for more formal support or legal intervention.

2026 Admissions

https://dunalleyps.schoolzineplus.co.uk/_file/media/6823/primary_poster_2026.pdf

Uniform Shop - At School



PTFA Uniform Shop

Our PTFA runs a Pre-Loved and New Uniform Shop to support families and promote sustainability.

How to Order

You can order items online via the PTFA's SumUp Store. Once your items are ready (usually within a couple of days), you'll receive an automated email. You can then collect your order from the box in the school reception.

In-Person Shopping

Keep an eye on the school newsletter for dates when the PTFA opens the shop for in-person browsing. They're also happy to open by appointment (subject to volunteer availability). To arrange a visit:

- Leave a message at the school office
- Or email:

Pay-As-You-Can

The shop operates on a pay-as-you-can basis. If your child or family needs uniform but cannot donate, please contact our Family Support Worker, Miss Alway:

-

Shop Online

Donations Welcome

The PTFA gratefully accepts donations of:

- School cardigans
- School jumpers
- School fleeces
- School dresses
- School book bags

Please ensure all items are washed and in good condition. Donations can be dropped off in the box at the school reception.

Need school uniform without the hassle or high cost? Our PTFA has a fantastic range of pre-loved items ready for you to browse. They'll prepare your selections for easy collection from school — it's all designed to make life simpler for families.

The PTFA are also happy to open up the shop on an appointment basis. Leave them a message at the school office or drop them an email ()

The shop operates on a pay as you can basis. Please contact if you are in need of uniform but not in a position to donate.

PTFA News & Updates

Christmas Card Project

Thank you to everyone who ordered. Cards and gifts arrived earlier in the week and have now been distributed around classrooms. If you have any problems with your order please leave us a message at the school office or drop us an email ().



New Farm Shop

Thanks to your support last year we've been able to buy a new farm shop to sit alongside the new mud kitchen that was recently delivered.



Tea and Toast with PTFA AGM

We're looking forward to seeing lots of you at Tea and Toast later. We'll give you an update in next week's newsletter following the AGM.

Winter Raffle

Our Winter Raffle will launch around 17th November. We're still in need of prizes for our Winter Raffle. If you work for a local business or are a family that might be able to donate a fabulous prize, please get in touch ([\[email protected\]](#)).

Christmas Fair on Friday 12th December

And we still need volunteers for our Christmas Fair on Friday 12th December (3:15-5:30pm). The more volunteers, the better the fair! We are a registered charity so you may be able to use your company's volunteering hours to support us.

Lions at Large Feedback Request

Hello Cub Club Members,

I hope you are enjoying your Cubs being back with your schools and community groups.

We have compiled a short questionnaire, we would really appreciate your thoughts and feedback on the Lions at Large project for us to make it even better for next time (yes, we are hoping there is a next time!).

<https://forms.office.com/Pages/ResponsePage.aspx?id=sITDN7CF9Ueylge0jXdO4zvE-yZ7AMNHvJfyyHMxwWRUOEw2WFpMQk0zTk1LWkpZRIFMvVKSU85UC4u>

There is an option to include your personal information when completing the form, but if you'd rather it be anonymous, please feel free to put 'Anon' in those data capture boxes instead.

We'd love to receive both teacher and pupil/young person's comments and therefore if your pupils could complete this too, this would further maximise the feedback that we receive (please note, no personal information is taken if the pupil option is selected, it is anonymous by default).

Your responses will help us to compile an impact report and therefore please do provide as much information as you can on your opinions and suggestions.

Please can we ask that you complete this by the **28th November** in order that we compile the report accordingly.

We will then share this with you in due course.

Thank you once again for your support.

Kind regards,

Carrie

Carrie Smith

Lions at Large Project Manager

Cheltenham and Gloucester Hospitals Charity

Outdoor Play Reminder for Families

Outdoor Play Reminder for Families

As part of our commitment to Outdoor Play and Learning (OPAL), children enjoy access to the school field, sand pit, forest school, and other exciting areas every day—except in extreme weather. To make the most of these enriching experiences, we kindly ask that all children come to school each day with:

- A **waterproof coat**
- A **change of shoes** suitable for outdoor play should be available for children too, we do recommend wellies and there are several pairs in our 'Welly Bank' should you need a pair.

These items help ensure that every child can fully participate in OPAL activities, stay comfortable, and enjoy the outdoors safely.

Thank you for your continued support in helping us make outdoor learning a joyful part of every school day!

OPAL - Can you help

As you will all know we're on a mission to make lunchtimes as fun and active as possible for our children — and you can help!

This week we'd love donations of:

- Ping pong bats and balls
- Pipes for water and ball play

Every item helps create more opportunities for imaginative, energetic play. Thank you for supporting OPAL Play and helping our pupils thrive!

Donations can be dropped off at the school office.

Help Our Children Shine – Sports Kit Sponsorship Opportunity

Would you like to help inspire young athletes and strengthen our community?

We're inviting local businesses and individuals to partner with Dunalley School by sponsoring a new sports kit for our children. This is a fantastic opportunity to show your commitment to community engagement while enhancing your brand visibility.

In return for your support, we will proudly showcase your sponsorship within our school community, on our website, and through local media—highlighting your role in creating positive social impact.

We believe this partnership offers real mutual benefit, and we'd love to explore ideas with you. Thank you for considering this opportunity.

For more information, please contact:
Sara Byrne, School Business Manager

Royal British Legion Poppy Appeal

This year we are once again supporting the Royal British Legion Poppy Appeal. We have one box of merchandise and one box of Poppies to sell and help raise funds at the school office

There are suggested donations for the merchandise: Slap Band – £1.50, Wristband – £1.00, Reflector – £1.00 and Zip Pulls 50p.



Children in Need



Children in Need 2025 will take place on Friday 14th November. We will be raising funds for this amazing charity through a Mufti Day.

Everyone is invited to wear their own clothes for a recommended donation of £1.

OPEN Morning

Nov
12
Wed

12 Nov 2025
9:30 AM to 11:30 AM

Whole school

School Photos - Individual portraits for all children plus sibling photos

Nov
20
Thu

20 Nov 2025

Whole school

Y2 Poppy Sewing with families

Nov
27
Thu

27 Nov 2025
1:30 PM to 3:15 PM

Yr2

Soup Making with families

Dec
5
Fri

05 Dec 2025
2:30 PM to 3:15 PM

Yr3

Mexican Food with families

Dec
8
Mon

08 Dec 2025
2:30 PM to 3:15 PM

Yr5